



SP Multisensor Camera

Capture every detail in a 360° rotation in Ultra High Resolution

The SP Multisensor camera comes with 4 individually positionable and configurable camera sensors offering 5MP resolution on each sensor. With effective resolution of 20MP, the camera provides excellent image quality to cover large areas. You also get maximum reliability with IndigoVision's Distributed Network Architecture, which removes the requirement for a central server, ensuring you never lose access to live video and benefit from minimal latency.

Key Features & Benefits



INCREASED RANGE OF SENSOR POSITIONING

The camera features four individually-adjustable camera sensors that can be positioned to monitor virtually any area.



LOW LIGHT TECHNOLOGY

Deliver safety and capture unexceptionably detailed footage even in low-light settings.



IP AND IK RATED

Trust the robustness and reliability of your system with IP66 weather rating and IK10 impact rating for vandal resistance.



INTERCHANGEABLE CAMERA MOUNTS

Modular design. Simple and intuitive to install so that you can be up and running in minutes



ONVIF® COMPLIANT

Built on an open platform to allow integration with other security solutions, so you can expand your existing security system.



5 YEAR WARRANTY

Gain peace of mind with products backed by a 5-year, industry-leading warranty.



WIDE DYNAMIC RANGE

Available in all resolutions, capture details in scenes with both very bright and dark areas, so you can detect suspicious activity in all lighting conditions.



ADAPTIVE INFRARED (IR)

Automatically adjusts IR performance based on scene conditions to help maximize image quality.



H.265 WITH SMARTCODEC TECHNOLOGY

Reduce costs by maximizing bandwidth utilization and storage consumption without compromising image quality.



AUDIO CAPABILITIES

Available ports for external audio including sirens, microphones and/or loudspeakers for audio talk-down situations.



RELAY I/O CONNECTIONS FOR FAST RESPONSE

Configure input actions (such as alarms) that trigger an external relay to perform an action (e.g., turn lights on).



NDAA COMPLIANT

Approach US government with confidence, knowing our cameras comply with the National Defense Authorization Act.

Specifications

| Image Performance (per image sensor) | |
|---|---|
| Sensor | 1/2.8" Progressive CMOS |
| Active Pixels | 2592 x 1944 |
| Maximum Resolution | 10368 × 1944 |
| Aspect Ratio | 4:3 |
| IR Illumination - Optional (high power 850 nm LEDs) | 30m (98 ft) maximum distance at 0 lux |
| Minimum Illumination | 0.025 lux (F1.2) in color mode 0.005 lux (F1.2) in mono mode 0 lux with optional IR illuminator |
| Dynamic Range | 100 dB, true WDR, dual exposure |
| 3D Noise Reduction Filter | Yes |
| Image Rate – Analytics Enabled on All Sensors | 13 / 13 fps (60 Hz/50Hz) |
| Image Rate – High Framerate Mode | 15 / 14 fps (60 Hz/50Hz) |
| Lens and Horizontal Field of View | 2.8mm f1.2 – 103° Remote focus |

| Image Control | |
|----------------------------|---|
| Image Compression Method | H.264, H.265, Motion JPEG |
| Streaming | Multi-stream H.264, Multi-stream H.265, Motion JPEG |
| Motion Detection | Selectable sensitivity and threshold |
| Electronic Shutter Control | Automatic, Manual (1/8 to 1/8000 sec) |
| Iris Control | Fixed |
| Day/Night Control | Automatic, Manual |
| Flicker Control | 60 Hz, 50 Hz |
| White Balance | Automatic, Manual |
| Backlight Compensation | Adjustable |
| Privacy Zones | Up to 64 zones |
| Audio Compression Method | G.711 PCM 8 kHz |
| Audio Input/Output | Line level input and output |
| External I/O Terminals | Alarm In, Alarm Out |

| Network | |
|-----------------------------|---|
| Network | Gigabit Ethernet, 1000BASE-TX |
| Cabling Type | CAT5E |
| Connector | RJ-45 |
| API | ONVIF® compliance Profile S and Profile T (www.onvif.org) |
| Security | Password protection, HTTPS encryption, digest authentication, WS authentication, user access log, 802.1x port based authentication, CyberVigilant |
| Protocol | IPv4, IPv6, HTTP, HTTPS, SOAP, DNS, NTP, RTSP, RTCP, RTP, TCP,UDP, IGMP, ICMP, DHCP, Zeroconf, ARP |
| Streaming Protocols | RTP/UDP, RTP/UDP multicast, RTP/RTSP/TCP, RTP/RTSP/HTTP/TCP, RTP/RTSP/HTTPS/TCP, HTTP |
| Device Management Protocols | SNMP v2c, SNMP v3 |
| Software Requirements | Control Center v17.2 or later |

| Peripherals | |
|-----------------|---|
| Onboard Storage | MicroSD/microSDHC/microSDXC slot – class 10/UHS-1 or better recommended |

Specifications

| | In-Ceiling Mount | Surface Mount | Pendant Mount |
|------------------------------|---|---|--|
| Mechanical | | | |
| Dimension | Ø299 mm × 163 mm (Ø11.77" × 6.42"), below mounting surface: Ø299 mm × 76 mm (Ø11.77" × 2.99") | Ø299 mm × 115 mm (11.77" × 4.53") | With wall arm: 385 mm × 262 mm × 299 mm (15.15" × 10.30" × 11.77") With NPT adapter: Ø299 mm × 248 mm (Ø11.77" × 9.76") |
| Weight | 5.2 kg (11.5 lbs) | With IR: 7 kg (15.4 lbs) Without IR: 5.8 kg (12.8 lbs) | With wall arm and IR: 8.4 kg (18.5 lbs) With wall arm only: 7.3 kg (16.1 lbs) With NPTA adapter and IR: 7.8 kg (17.2 lbs) With NPTA adapter only: 6.7 kg (14.8 lbs) |
| Body | Aluminum, Plastic dome trim | Aluminum | Aluminum |
| Finish | Plastic, cool grey | Powder coat, cool grey | Powder coat, cool grey |
| Environmental | Not applicable | IK10 Impact Rating and IP66 Weather Rating | |
| Optional IR Illuminator Ring | Not applicable | Optional accessory, 30m (98 ft) IR range | |

| | |
|------------|--|
| Per Sensor | |
| Tilt | +7° to 96° from horizon |
| Pan | +/-120° (depending on position of image sensors) |
| Azimuth | +/-180° |

| | | | |
|-------------------|---|--|--|
| Electrical | | | |
| Power Consumption | 26 W with 24 VDC 37 VA with 24 VAC POE+ | With IR: 52 W with 24 VDC 74 VA with 24 VAC POE++ or 60W POE* Without IR: 26 W with 24 VDC 37 VA with 24 VAC POE+ | With IR: 52 W with 24 VDC 74 VA with 24 VAC POE++ or 60W POE* Without IR: 26 W with 24 VDC 37 VA with 24 VAC POE+ |
| External Power | 24 VDC ± 10%; 24 VAC rms ± 10%, 50 or 60Hz | | |
| PoE* | 25.5W PoE+, IEEE 802.3at Type 2 PoE Plus | With IR: High Power 51W PoE++* Without IR: 25.5W PoE+, IEEE 802.3at Type 2 PoE Plus | |

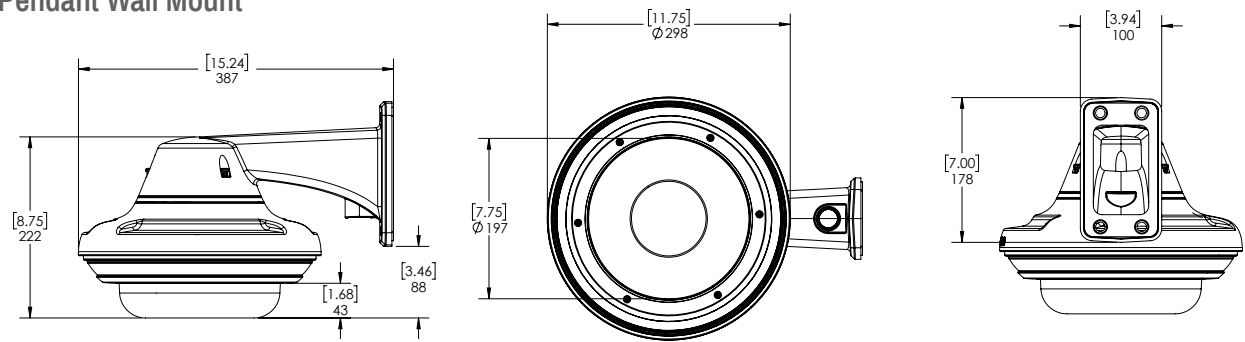
* High power PoE may not be compatible with all switches or injectors. High power PoE is compatible with Cisco® UPoE, up to 60 W over 4 pairs, or with the high PoE products listed in the Accessories section.

| | | |
|-----------------------------|-----------------------------------|-----------------------------------|
| Environmental | | |
| Operating Temperature Range | -10 °C (14 °F) to 50 °C (122 °F) | -40 °C (-40 °F) to 60 °C (140 °F) |
| Storage Temperature | -10 °C to 70 °C (14 °F to 158 °F) | |
| Humidity | 0-95% non-condensing | |

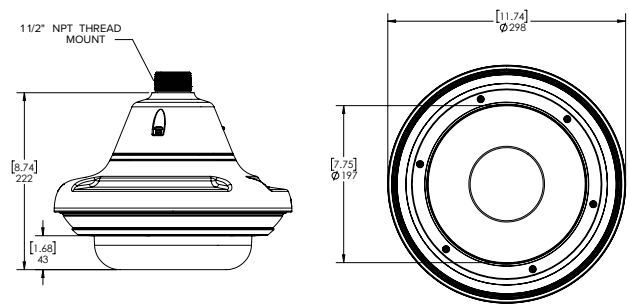
| | | |
|---------------------------|--|---|
| Certifications | | |
| Certifications | UL, cUL, CE, ROHS, WEEE, RCM, EAC, BIS, KC | |
| Safety | UL 62368-1, CSA 62368-1, IEC/EN 62368-1 | |
| Environmental | UL 2043 Plenum | UL/CSA/IEC 60950-22 IEC 60529 IP66 Rating, IK10 Impact Rating, IEC 60068-2-6 IEC 60068-2-27 Vibration and Shock |
| Electromagnetic Emissions | FCC Part 15 Subpart B Class B, IC ICES-003 Class B, EN 55032 Class B, EN 61000-6-3, EN 61000-3-2, EN 61000-3-3, EN 50121-4 (when used with AUX-FERR-TRKSID on aux power) | |
| Electromagnetic Immunity | EN 55035, EN 61000-6-1 | |
| Directives | RoHS, Reach (SVHC), WEEE | |

Outline Dimensions

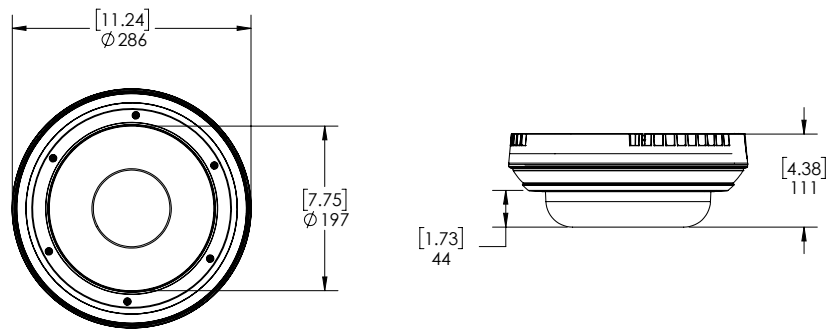
Pendant Wall Mount



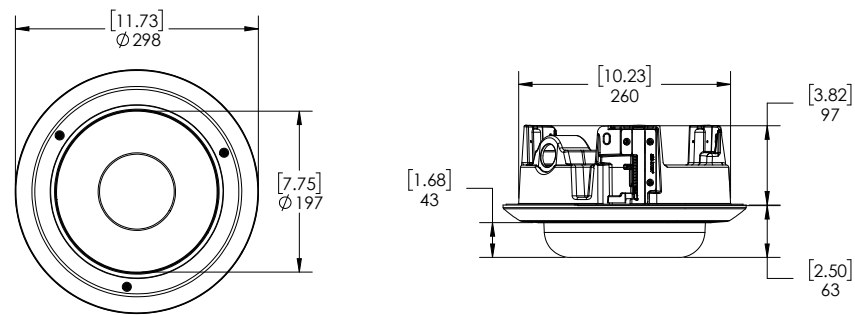
Pendant NPT Mount



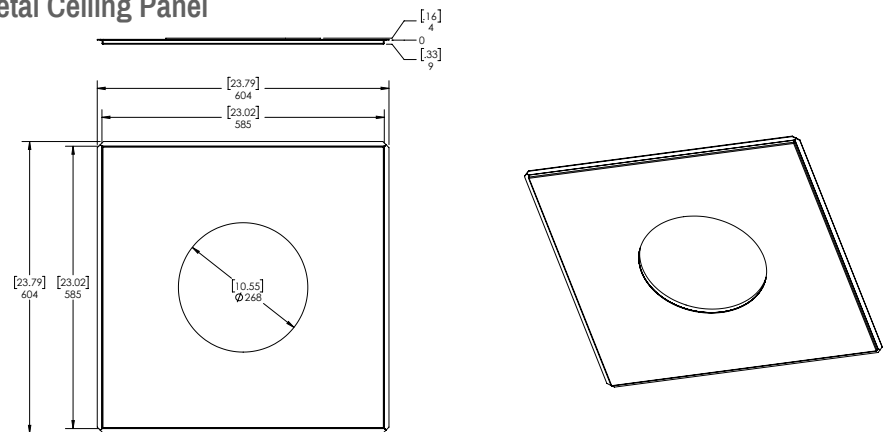
Surface Mount



In-Ceiling Mount



Metal Ceiling Panel



| [X.X] | INCHES |
|-------|--------|
| X | MM |

Ordering Information

The variety of mounting options for the SP Multisensor provides maximum flexibility. The camera module can be used in any of the mounting options.

| Mounting Scenario | Ordering Information |
|--|---|
| PENDANT WALL MOUNT  | Order one of: <ul style="list-style-type: none">• Camera module (SP-20MP-MS-360)• MS-AD-PEND• MS-DO-COVR-CLR or MS-DO-COVR-SMK• MS-IRPTZ-WALL-MNT• Optional, MS-AD-IRIL |
| PENDANT NPT MOUNT  | Order one of: <ul style="list-style-type: none">• Camera module (SP-20MP-MS-360)• MS-AD-PEND• MS-DO-COVR-CLR or MS-DO-COVR-SMK• MS-IRPTZ-NPTA-MNT• Optional, MS-AD-IRIL |
| SURFACE MOUNT  | Order one of: <ul style="list-style-type: none">• Camera module (SP-20MP-MS-360)• MS-AD-DOME• MS-DO-COVR-CLR or MS-DO-COVR-SMK• Optional, MS-AD-IRIL |
| IN-CEILING MOUNT  | Order one of: <ul style="list-style-type: none">• Camera module (SP-20MP-MS-360)• MS-AD-CEIL• MS-DC-COVR-CLR or MS-DC-COVR-SMK• Optional, MS-DC-CPNL if ceiling panel needed |

| Display Part Number | Product Code | Description |
|---------------------|--------------|------------------------------------|
| SP-20MP-MS-360 | 754980 | SP Multisensor, Camera Module Only |

Mounting Adapters and Dome Covers

The SP Multisensor modular design provides pendant, surface, or in ceiling mounting adapters and a choice of two dome compatible covers per mounting option.

| Display Part Number | Product Code | Description |
|---------------------|--------------|--|
| MS-AD-DOME | 150251 | Outdoor surface mount adapter, must order either a MS-DO-COVR-CLR or MS-DO-COVR-SMK. |
| MS-AD-PEND | 150252 | Outdoor pendant mount adapter, must order one of MS-IRPTZ-WALL-MNT or MS-IRPTZ-NPTA-MNT and one of MS-DO-COVR-CLR or MS-DO-COVR-SMK. |
| MS-IRPTZ-WALL-MNT | 150500 | Pendant wall arm adapter, for use with MS-AD-PEND. |
| MS-IRPTZ-NPTA-MNT | 150501 | Pendant NPT adapter for use with MS-AD-PEND. |
| POLE-MNT | 150506 | Aluminum pole mounting bracket. |
| CRNR-MNT | 150507 | Aluminum corner mounting bracket. |
| MS-AD-CEIL | 150253 | In-ceiling adapter, must order either a MS-DC-COVR-CLR or MS-DC-COVR-SMK. |
| MS-DO-COVR-CLR | 150400 | Dome bubble and cover, for outdoor surface mount or pendant mount, clear. |
| MS-DO-COVR-SMK | 150401 | Dome bubble and cover, for outdoor surface mount or pendant mount, smoked. Not recommended for lowlight applications. |
| MS-DC-COVR-CLR | 150403 | Dome bubble and cover, for in-ceiling mount, clear. |
| MS-DC-COVR-SMK | 150402 | Dome bubble and cover, for in-ceiling mount, smoked. Not recommended for lowlight applications. |
| MS-DC-CPNL | 150258 | Metal ceiling panel. |

Ordering Information

Optional IR Illuminator

The optional IR Illuminator is available for the SP Multisensor when mounted in a pendant or surface mount adapter.

| Display Part Number | Product Code | Description |
|---------------------|--------------|--|
| MS-AD-IRIL | 150250 | Optional IR illuminator ring, up to 30m (98ft), for use with MS-DO-COVR-CLR. |

Optional Injectors

| Display Part Number | Product Code | Description |
|---------------------|--------------|---|
| POE-60 | 150101 | Indoor single port Gigabit PoE++ 60W, Region specific power cord included. Temperature range of the PoE injector is -10 °C to +45 °C (14 °F to 113 °F). |
| POE-30 | 150100 | Indoor single port POE+ injector. Injector operational temperature range -20°C to +40°C (-4°F to 104°F). |

Miscellaneous Accessories

| Display Part Number | Product Code | Description |
|---------------------|--------------|---|
| AUX-FERR-TRKSID | 150550 | Ferrite clamp for use with aux power cable when meeting EN 50121-4 requirements. Pack of 5. |